



PREMIUM AFTERMARKET WIND DEFLECTORS



INSTALLATION INSTRUCTIONS

MG MGA Wind Deflector 1955-1962

Product No.: 31.04.01.01

What's in the box

- 1 x wind deflector
- 1 x installation manual
- 2 x wind deflector brackets
- 2 x bolts
- 2 x washers

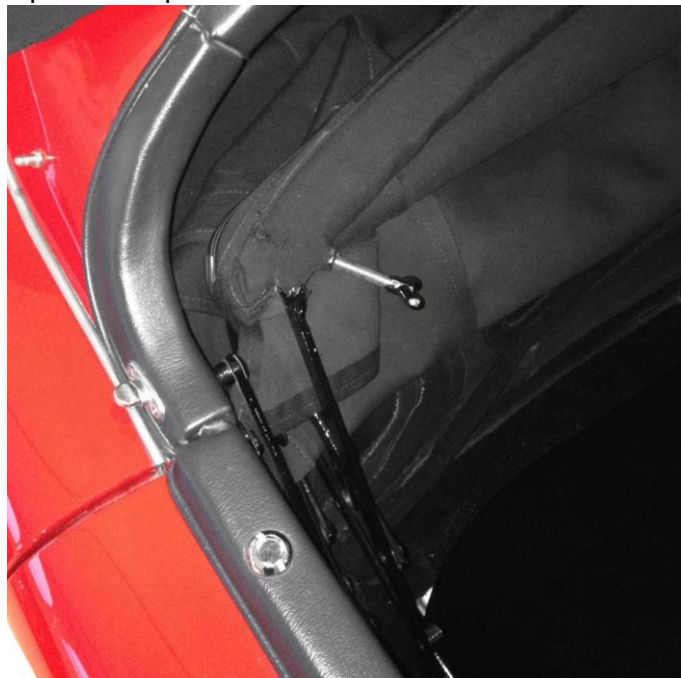




INSTALLATION INSTRUCTIONS

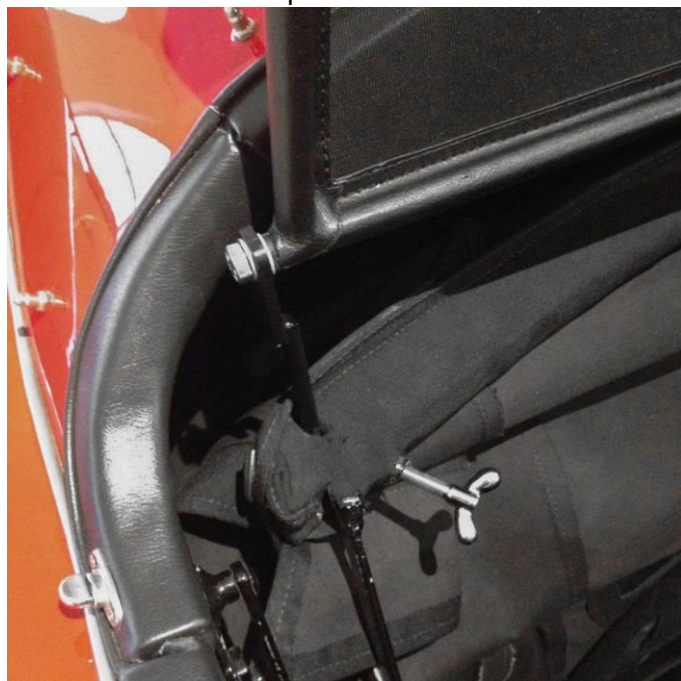
STEP 1

Open the top.



STEP 2

Attach the brackets top the wind deflector using the supplied bolts and washers. Place the wind deflector with the brackets in the holes for the soft top lock. Secure the brackets using the bolt of the soft top lock.





STEP 5

Go out for a test drive and enjoy your wind deflector!

